

IPAL NEWSLETTER

THE IPAL PROJECT

The IPAL project aims at developing **quality assurance tools** and **training resources** that promote the professional development of adult trainers and the quality of adult education.

Partners are currently conducting qualitative research involving adult education providers and adult trainers, the primary target groups of the project, so as to design and develop an analytical tool for external assessment and self-assessment of adult education relevance and effectiveness.



The tool will help adult education providers to map their strengths and weaknesses and to develop effective strategies for development, thus enabling and improving quality assurance in adult education. Find out more about the Intellectual Output 3 - *Scorecard and screening questionnaire on adult education providers' performance in terms of the relevance of the adult education provision* here: <https://ipalproject.eu/intellectual-output-3/>

Contents:	INTELLECTUAL OUTPUT 1 pg. 2	INTELLECTUAL OUTPUT 2 pg. 2	IPAL BLOG pg. 3
------------------	-----------------------------------	-----------------------------------	--------------------



THE IPAL OUTPUTS

INTELLECTUAL OUTPUT 1

Scorecard and screening questionnaire on adult education providers' performance in terms of the professional development of adult educators

The self-assessment tool is fully ready and available in all partner languages (Spanish, Italian, German, Greek, Bulgarian). It consists of 4 sets of questions that cover the following thematic areas, so as to guide adult education providers on important aspects of CPD for their staff: Financing of CPD, Future Orientation, Internal aspects, Public image.

FIND THE SELF-ASSESSMENT TOOL FOR ADULT EDUCATION PROVIDERS HERE:

<https://ipalproject.eu/intellectual-output-1/>

INTELLECTUAL OUTPUT 2

The 8 IPAL modules - teaching methods and techniques in adult education

Partners have now finalized all 8 modules in English and are proceeding with translations in partner languages. Check our e-learning platform below and learn about:

1. The flipped classroom approach
2. Project-based learning
3. Techniques for stimulating logical thinking, imagination and memory
4. Effective techniques for communication and work with parents and family members
5. Applying creativity techniques in adult education
6. Using interactive (online and digital) resources,
7. Monitoring adult learners' performance
8. Culturally responsive teaching techniques

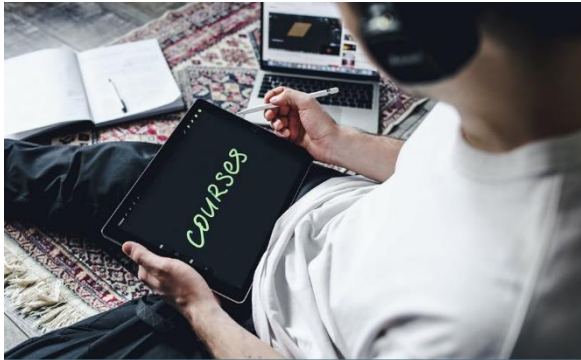
<https://www.ipaltraining.eu/>



CHECK OUR BLOG!

Interested to learn more about Continuous Professional Development (CPD) and our IPAL project news?

Visit our blog!



The 8 IPAL modules for adult educators



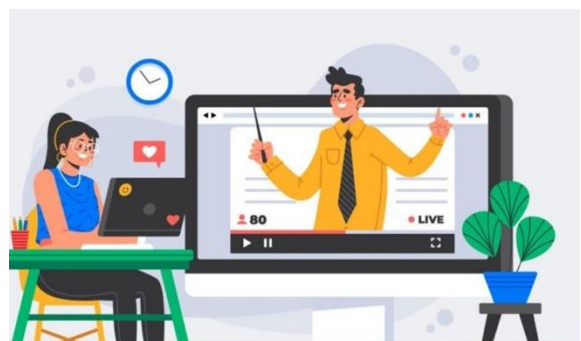
A resourceful meeting in the treasure city of Mantua



Why knowing how your adult education organisation performs in CPD matters



The 3rd IPAL transnational meeting in Athens



The importance of CPD for employers and CPD learning types



Monitoring of CPD



THE PARTNERS



TRIBEKA TRAINING LAB
SPAIN
WEBSITE: <https://www.tribeka.es/>



PROMIMPRESA S.R.L.
ITALY
WEBSITE: <https://www.promimpresa.it/>



EUROPEAN CENTER FOR QUALITY LTD (ECQ)
BULGARIA
WEBSITE: <https://www.ecq-bg.com/>



WISAMAR
GERMANY
WEBSITE: <https://www.wisamar.de/>



ACADEMY OF ENTREPRENEURSHIP
GREECE
WEBSITE: <https://akep.eu/>

VISIT US AT:

<https://ipalproject.eu/>



IPAL

Quality in Adult Education



<https://www.facebook.com/ipalproject>



<https://www.linkedin.com/company/ipal-project/>

Co-funded by the
Erasmus+ Programme
of the European Union



The European Commission's support for the production of this publication does not constitute an endorsement of the contents, which reflect the views only of the authors, and the Commission cannot be held responsible for any use which may be made of the information contained therein.